



AkyDrive™ Lining

Lightness and Performance for perfectly protected walls

Less weight and
stronger protection
for your vehicle

An ideal alternative to wood,
AkyDrive Lining combines
lightness and mechanical
performance: your utility
vehicle is fitted with clean,
strong and washable walls.



Scratch & impact
resistant



Light



Resistant to
water & chemicals

AkyDrive™ Lining

AkyDrive™

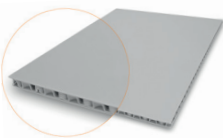
Lining Technical characteristics

Density	g/m ²	1200	1500	2000
Thickness	mm	3,8	4	6,3
Flexural strength (ISO 178)	N	48	70	130
Flexural rigidity (ISO 178)	N/mm	7,5	7,5	26
Hardness	shore D	>25	>25	>30
Flame propagation speed (FMVSS 302)	mm/mn	< 100		
Volatile organic compounds	Not detectable at ambient temperatures			

Two finishing surfaces

AkyDrive™

Smooth surface appearance



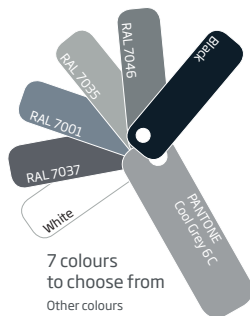
Scratch resistance:



Impact resistance:



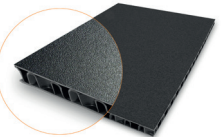
Cleaning:



7 colours to choose from
Other colours on request

AkyDrive™

3DS - Grainy surface appearance



Scratch resistance:



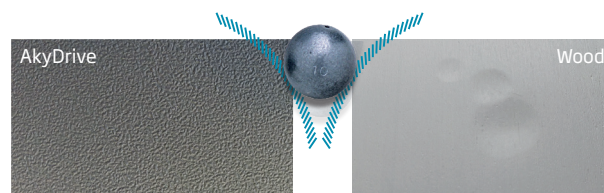
Impact resistance:



Cleaning:



Impact comparison



AkyDrive

Wood

Impact resistance at 23°C
(500 g steel ball, drop height 250 mm)

No effect

Impact

Impact resistance at -30°C
(500 g steel ball, drop height 250 mm)

No effect

Impact

Expert Opinion



“ Numerous major players in the automotive industry have used AkyDrive solutions to fit out their utility models in OEM and retrofitting. An excellent solution for combining environmental friendliness and performance. ”

Jérémy Frénéat,
Market Manager OEM

Our experts answer your questions:
akydrive@dssmith.com | www.dssmith.com/akydrive